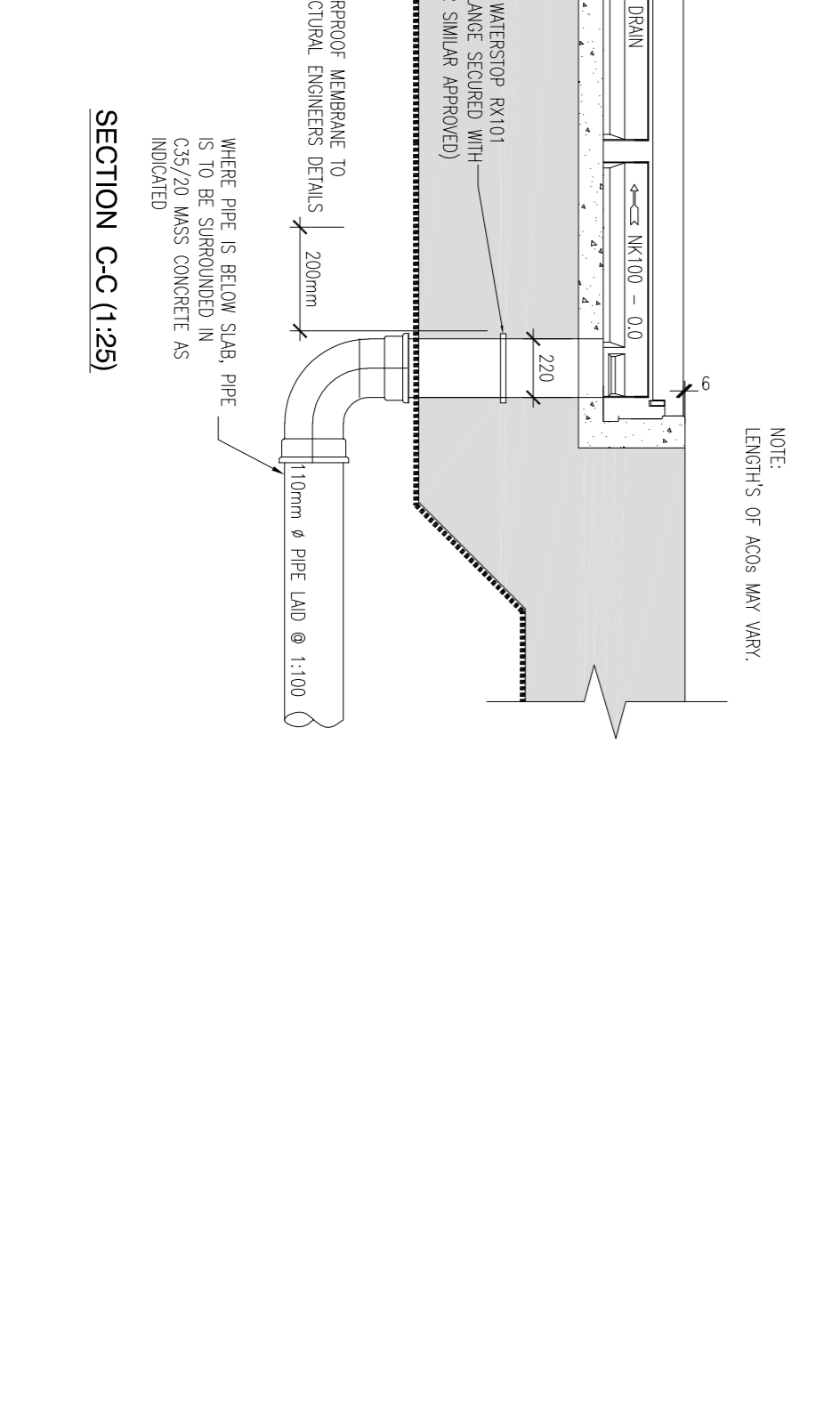
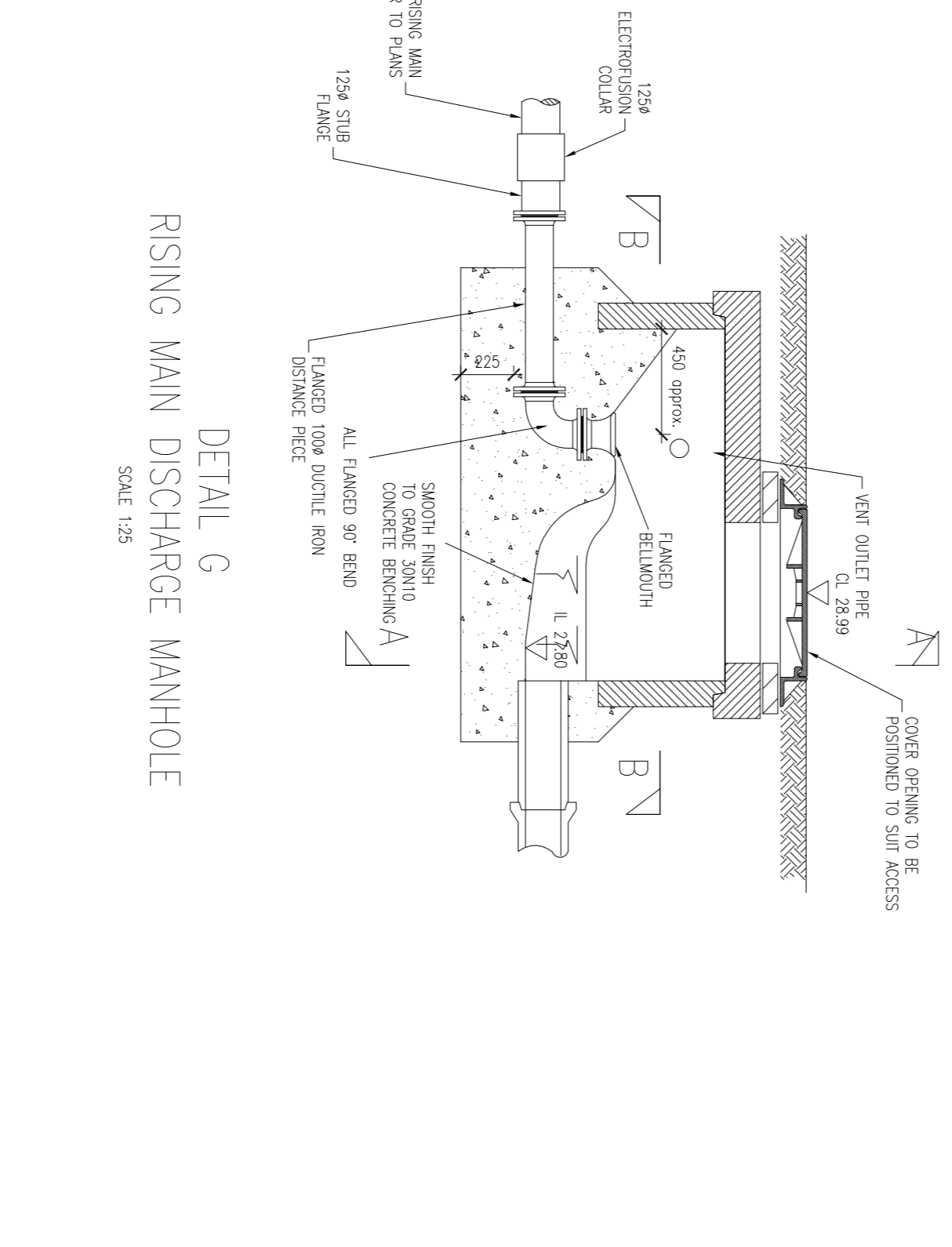
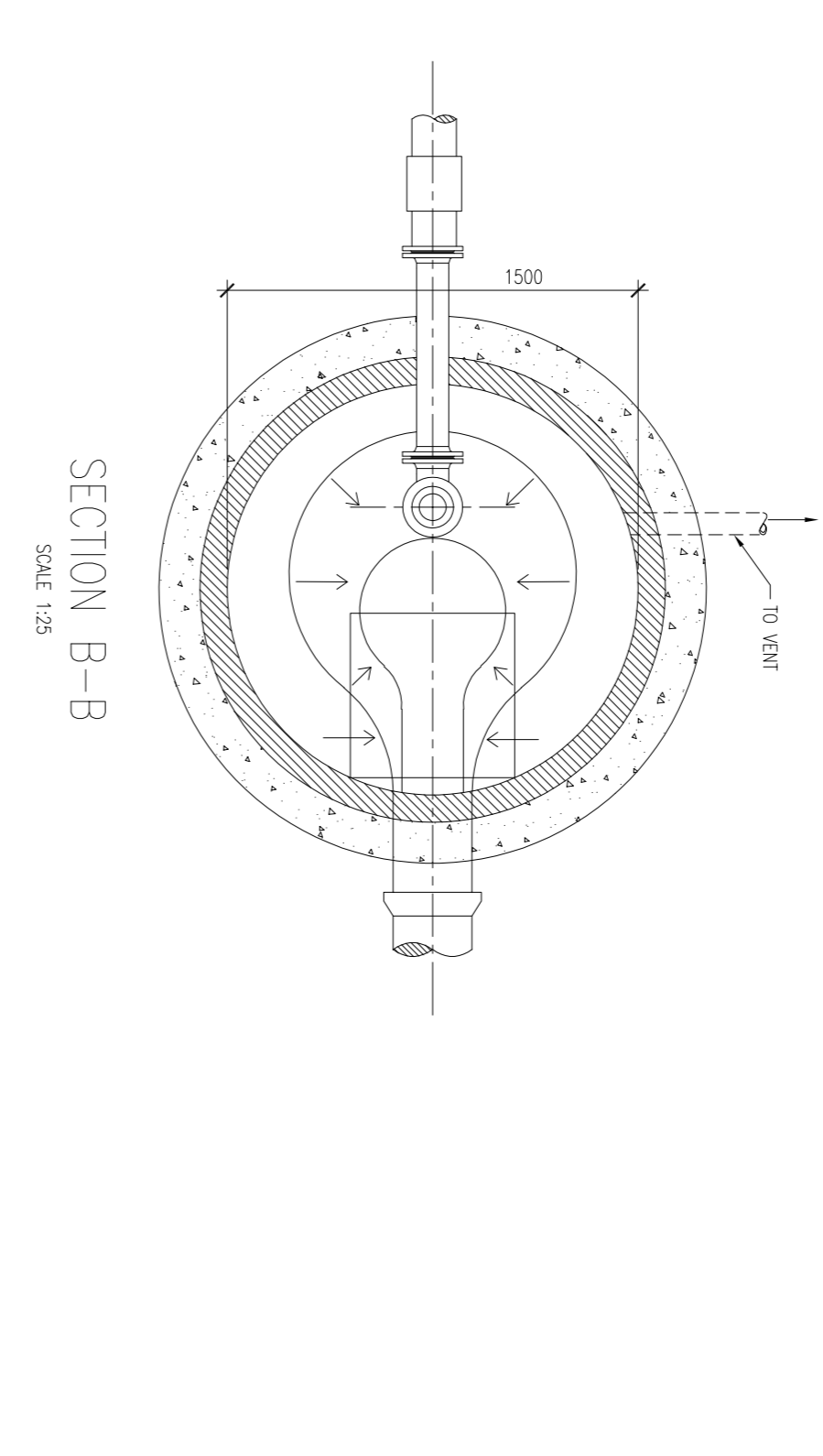
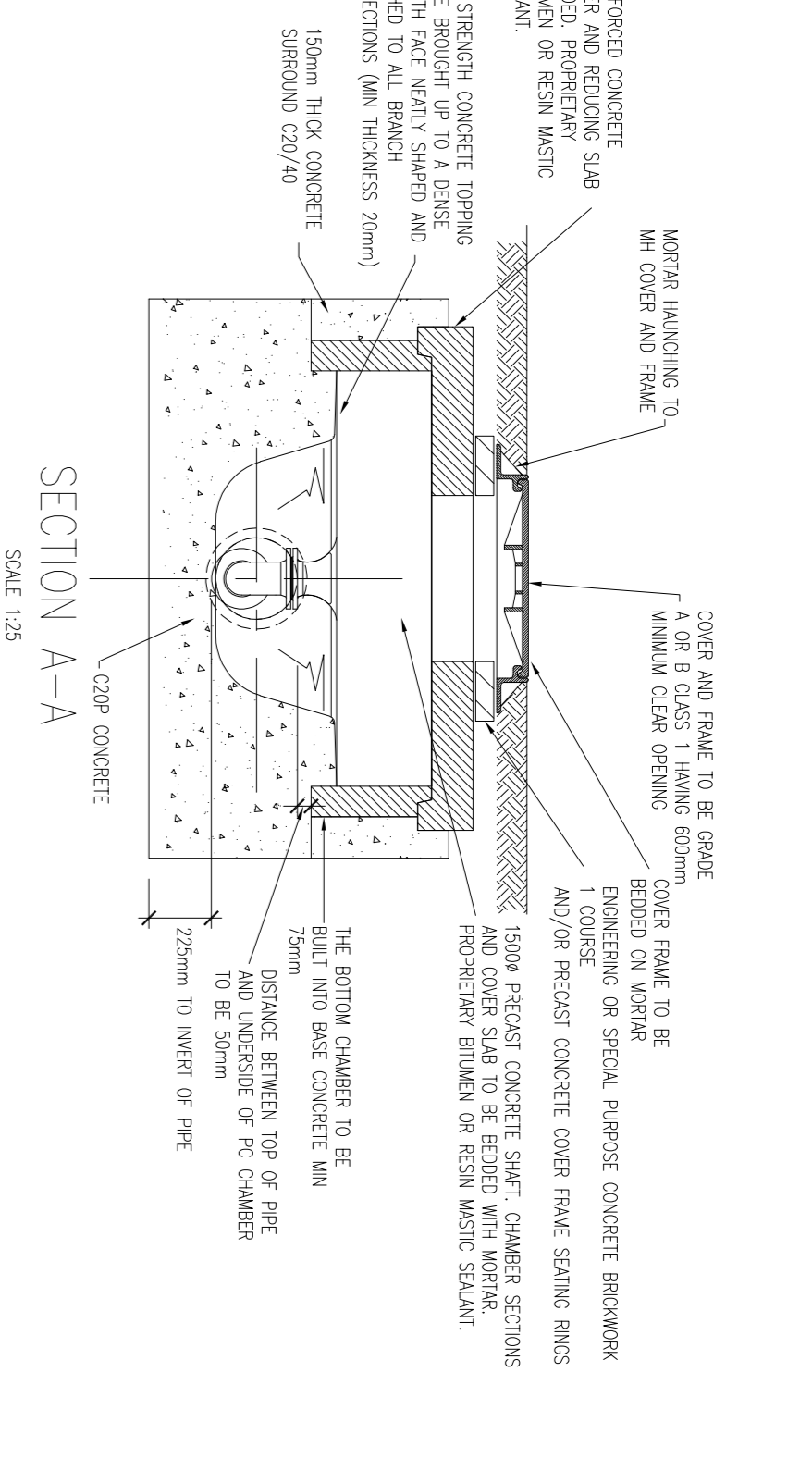
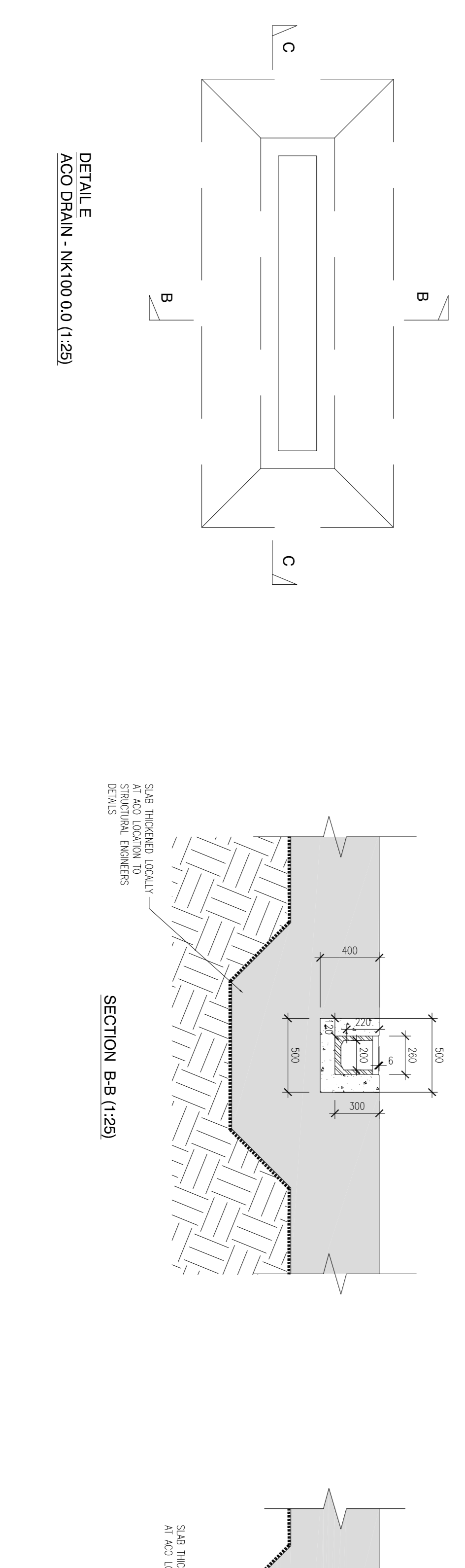
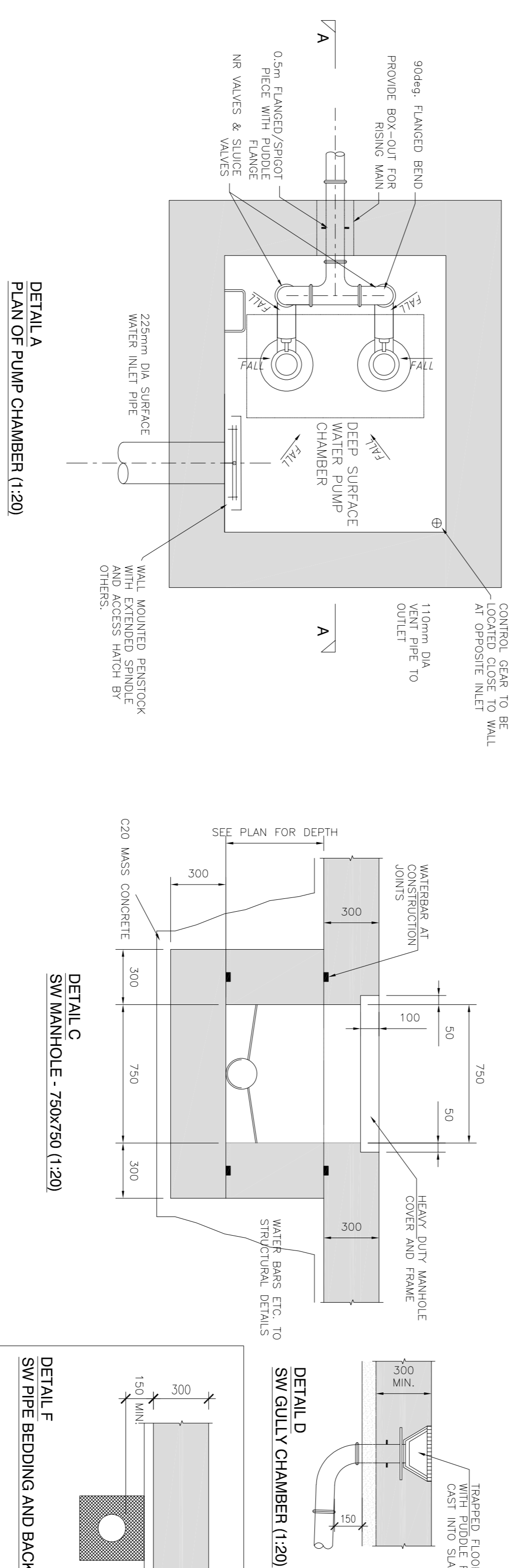
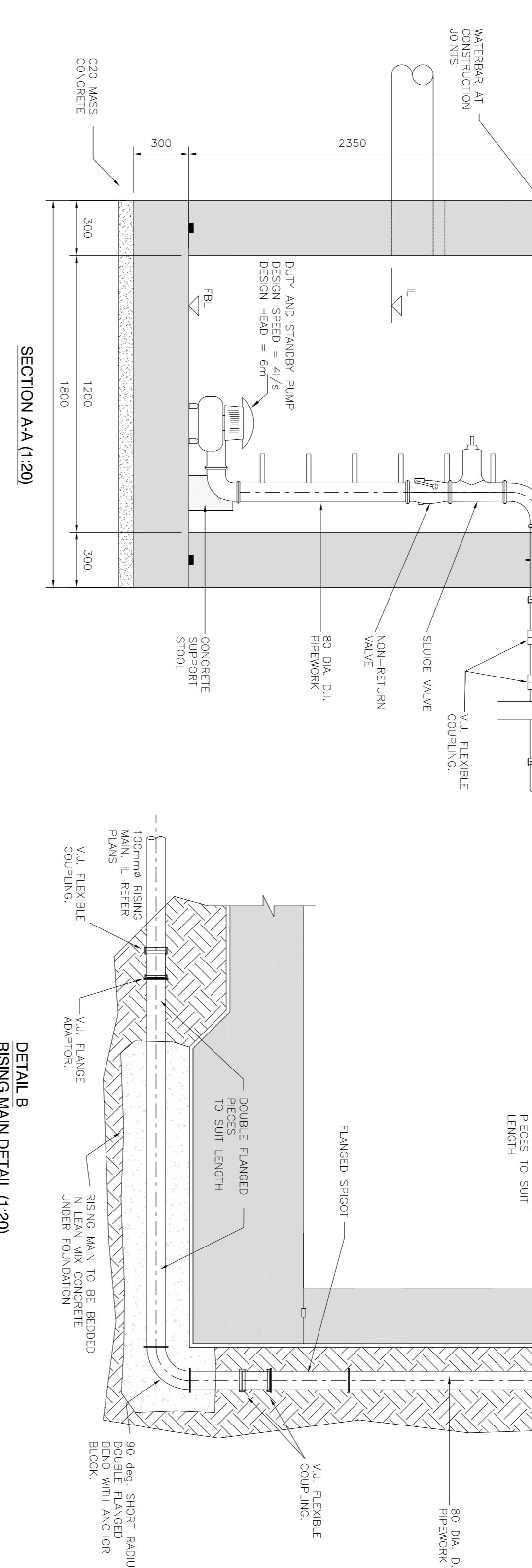
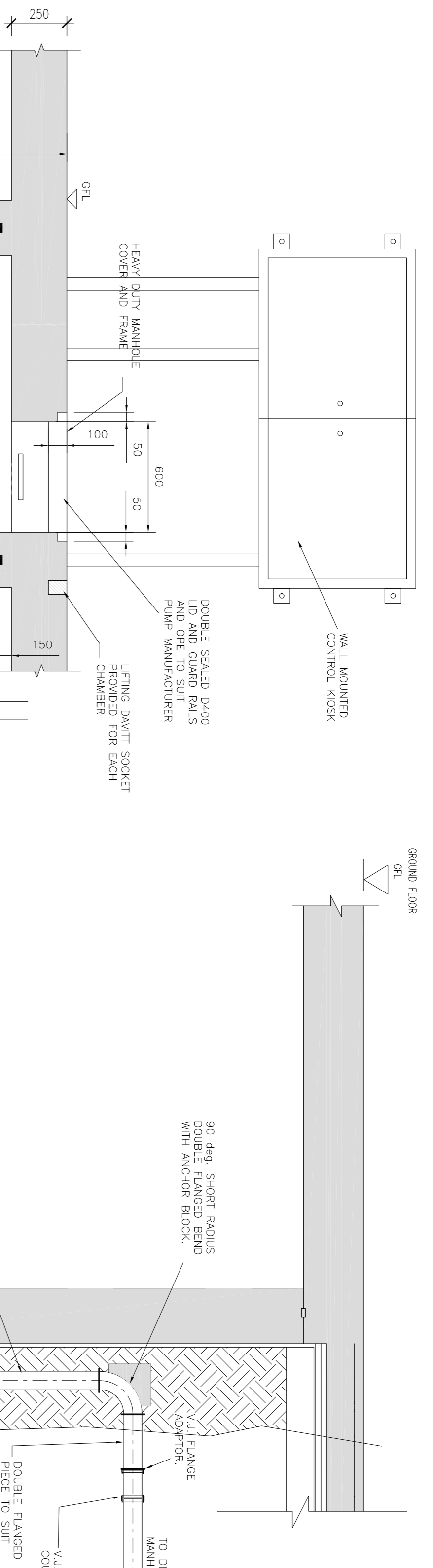


**NOTES**

1. ALL WORKS TO COMPLY WITH THE CURRENT BUILDING REGULATIONS, WATER BYELAWS AND LOCAL AUTHORITY REQUIREMENTS.
2. ALL SEWERS SHALL BE PRESSURE TESTED PRIOR TO BACKFILLING
3. TYPE 1 GRANULAR MATERIAL : BROKEN STONE OR GRAVEL TO PASS 10mm SIEVE AND BE RETAINED ON 5mm SIEVE.
4. TYPE 2 GRANULAR MATERIAL : BROKEN STONE OR GRAVEL TO PASS 10mm - 25mm SIEVE, ACCORDING TO PIPE SIZE. (SEE TABLE) AND BE RETAINED ON 5mm SIEVE.
5. TYPE 3 SELECTED FILL : UNFROWN HEAVILY COMPACTED MATERIAL FREE FROM TREE ROOTS, VEGETABLE INCLUDING CLAY LUMPS REMAINED ON A 75mm SIEVE AND STONES REMAINED ON A 37.5mm SIEVE.
6. RIGID PIPES SHALL MEAN CAST OR SPIN IRON, CONCRETE OR CLAY.



Rev.	Date	Description	By	CHK
P3	04/02/19	ABP PLANNING PERMISSION		PTC GD
P2	24/01/19	IRISH WATER SUBMISSION		PTC GD
P1	12/01/17	FURTHER INFORMATION RESPONSE		PTC GD
P	07/12/16	REVISED LAYOUT/APPLICATION		PTC GD

**PLANNING**

**gdci** CONSULTING ENGINEERS

Scope House,  
Perrystown, Co. Dublin D18  
www.gdci.ie

75 Shelton Street,  
Covent Garden,  
London WC2H 9JQ

**PROJECT**  
Cookstown Crescent  
Second Avenue

**CLIENT**  
Cookstown Regeneration Ltd

**DRAWING TITLE**  
Typical Construction Details  
Sheet 3

dm. by: PTC	date: May 16	scale: As Shown
drawing size: A1	chk: TM	app: GD
job no: P-1605	fig. no: P-1605-C-103	rev: P3